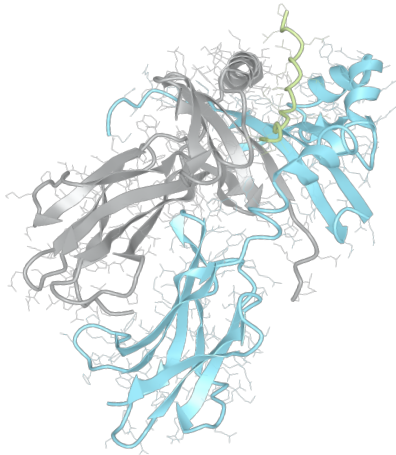


# Product datasheet



## sHLA- DRB1\*03:01 DRA\*01:01

DRB1\*0301, DRB10301, DRB1\*03, DRB03, DR17  
DRA\*0101, DRA0101, DRA\*01, DRA01

<b>Serological Name</b>	DR17
<b>Peptide Load</b>	Endogenous
<b>Modification</b>	Unmodified
<b>Conjugation</b>	Unconjugated
<b>SKU</b>	DRB10301

### Product Description

<b>Allele Name</b>	<p>DRA*01:01</p> <p>DRB1*03:01</p>
<b>HLA Class</b>	HLA Class II
<b>HLA Gene Locus</b>	HLA-DR
<b>Alternative Allele Name A Chain</b>	DRA*0101, DRA0101, DRA*01, DRA01
<b>Alternative Allele Name B Chain</b>	DRB1*0301, DRB10301, DRB1*03, DRB03, DR17
<b>Description</b>	Recombinant, truncated Class II soluble Human Leukocyte Antigen (sHLA), naturally folded and glycosylated, loaded with endogenous peptides.
<b>Serological Name</b>	DR17
<b>Serological Split</b>	DR3
<b>Allele Frequency [World Population]</b>	
<b>A chain</b>	-
<b>B chain</b>	6.1%

### Associated products

[DRB10301bio](#)  
[DRB10301pe](#)

## Product Specification

<b>Product name</b>	HLA-DRB1*03:01
<b>HLA Species</b>	Human
<b>Host Cell Line Species</b>	Mouse
<b>Clone Designation</b>	
<b>Tail Specification</b>	ZP
<b>Peptide Load</b>	Endogenous
<b>Modification</b>	Unmodified
<b>Conjugation</b>	Unconjugated
<b>Complexity</b>	Monomer
<b>Protein Format</b>	Recombinant, truncated, zipper-stabilized, soluble, non-modified, non-labeled, endogenously loaded
<b>Storage Temperature</b>	4°C (This product should be stored undiluted)
<b>Form</b>	Liquid
<b>Concentration</b>	1000.0 µg/ml
<b>Formulation</b>	PBS/0.02% Sodium Azide
<b>pH</b>	7.4
<b>Purification Method</b>	Affinity Chromatography
<b>Grade</b>	Research Use Only [RUO]
<b>Authentication Verification</b>	Sequence Based Typing

## Protein Sequences

<b>Alpha Chain Sequence</b>	<p>IKEEHVIIQA EFYLNPDQSG EFMDFDGDGE IFHVDMAPKE TVWRLEEFGR FASFQAQAL          ANIAVDKANL EIMTKRSNYT PITNVPPEVT VLTNSPVELR EPNVLICFID KFTPPVVNVV          WLRNGKPVTT GVSETVFLPR EDHLFRKFHY LPFLPSTEDV YDCRVEHWGL DEPLLKHWEF          DAPSPLPETT EVDGGGGGAQ LEKELQALEK ENAQLEWELQ ALEKELAQ</p>
<b>Beta Chain Sequence</b>	<p>GDTRPRFLEY STSECHFFNG TERVRYLDRE FHNQEENVRF DSDVGEFRAV TELGRPDAY          WNSQKDLLEQ KRGRVDNYCR HNYGVVESFT VQRRVHPKVT VYPSKTQPLQ HHNLLVCSVS          GFYPGSIEVR WFRNGQEEKT GVVSTGLIHN GDWTFQTLVM LETVPRSGEV YTCQVEHPSV          TSPLTVEWRA RSESAQSKVD GGGGAQLKK KLQALKKKNA QLKWKLQALK KKLAQ</p>

## Related Products

[DRB11101](#)  
[DRB10701](#)  
[DRB11501](#)  
[DRB10301](#)

## Applications

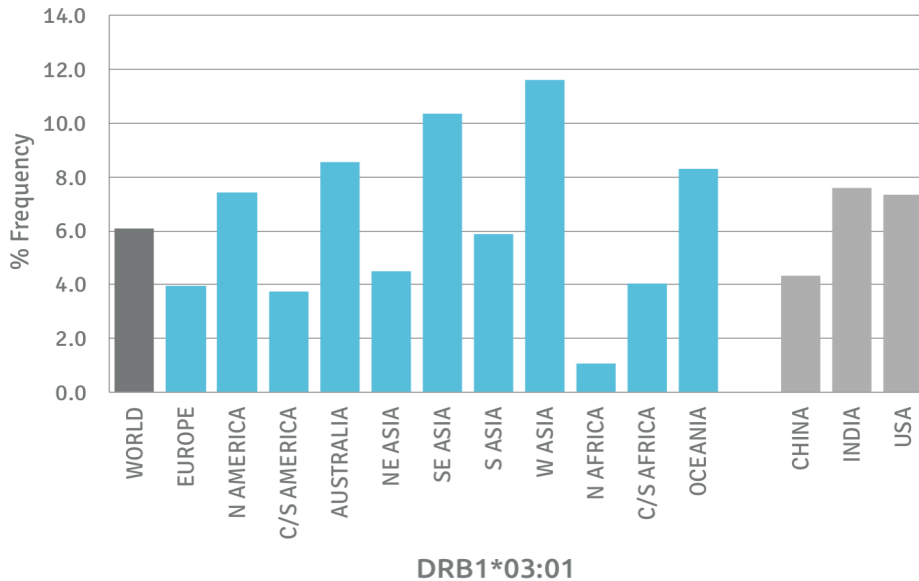
HLA Sandwich ELISAs  
 HLA Direct ELISAs  
 HLA-Sera Antibody Assays  
 HLA Controls in ELISA Assays  
 HLA Assay Standards  
 HLA Blocking Assays  
 HLA Neutralizing Assays  
 HLA Competition Assays  
 HLA Bead Assays  
 HLA Immunization Procedures

## Recommended Antibodies

L243

## Allele Frequency

### Worldwide Allele Frequency



Please note:

ALL PRODUCTS ARE FOR RESEARCH USE ONLY. NOT FOR COMMERCIAL USE IN DIAGNOSTIC PROCEDURES.  
 For more information, please visit our Policies section on our website. For licensing inquiries, please contact

[licensing@hlaprotein.com](mailto:licensing@hlaprotein.com)

 HLA Protein  
PURE PROTEIN LLC

Eplet Assignments

DRB1\*03:01

Eplet	Polymorphic Residues	Antibody Reactivity
4R	4R	Yes
11STS	9E10Y11S12T13S	Yes
13SE	13S14E	
16H	16H	
25R	25R	Yes
26Y	14E25R26Y	
28D	28D	
31F	31F	
31FH	31F32H33N	
32H	32H33N	
33N	33N	
37N	37N38V	
38V	38V	
40F	40F41D	
47F	47F48R	Yes
57D	57D60Y	
57DA	57D58A60Y	
58A	58A	
58AY	58A60Y	
60Y	60Y	
67LQ	67L 70Q	Yes
70Q	70Q	
70QK	70Q71K	
71K	71K	
73G	73G	
74R	70Q73G74R	Yes
77N	73G77N78Y	Yes
78Y	78Y	
85V	85V	
85VV	85V86V	
86V	86V	
96H	96H	
96HK	96H98K120S	Yes
98K	98K	
98KS	98K120S	
108P	105K108P	
112H	112H	
120S	120S	
140TV	140T142V	
149H	149H	
180V	180V	
180VTP	180V181T183P	
181T	181T	
189R	187E189R	